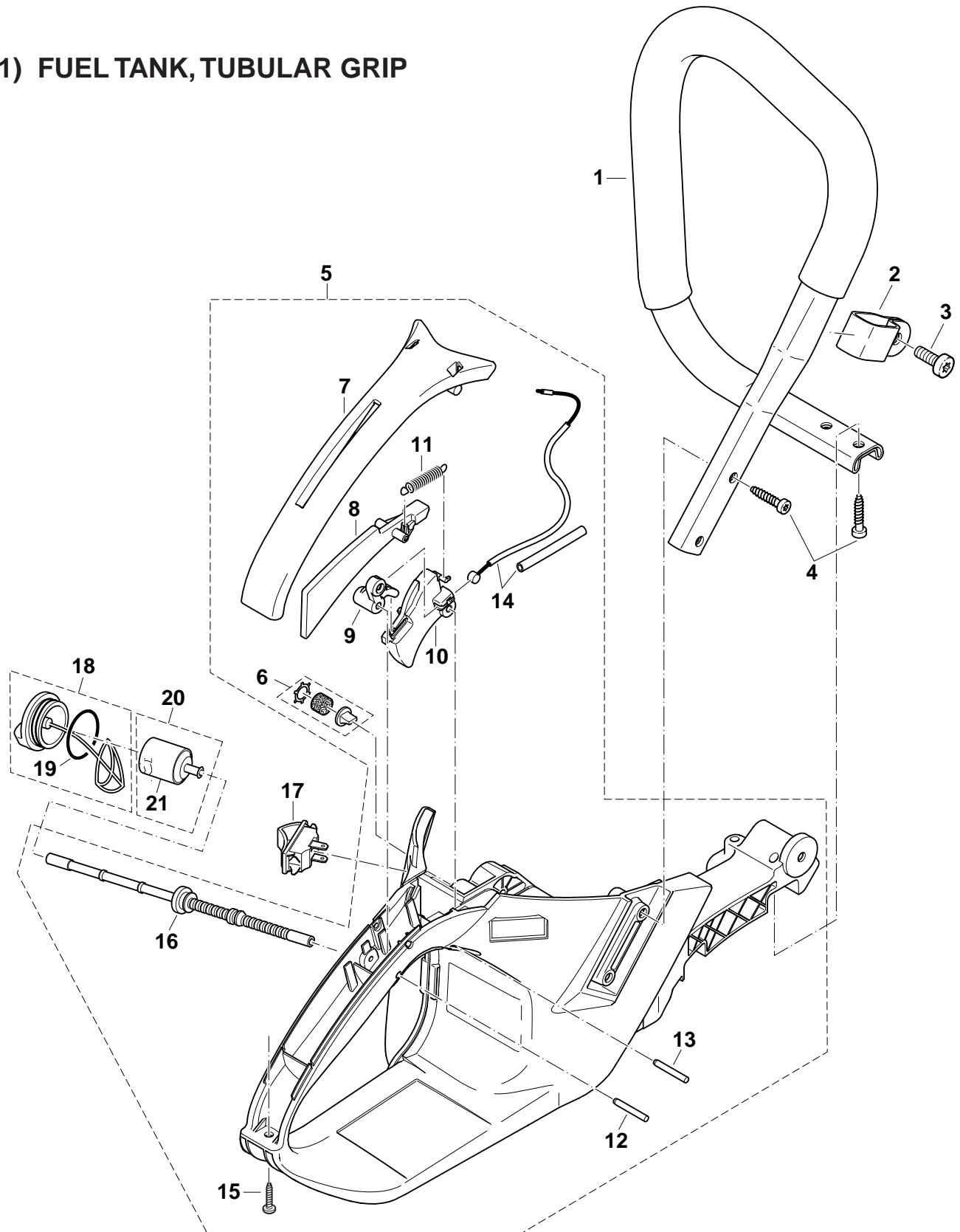


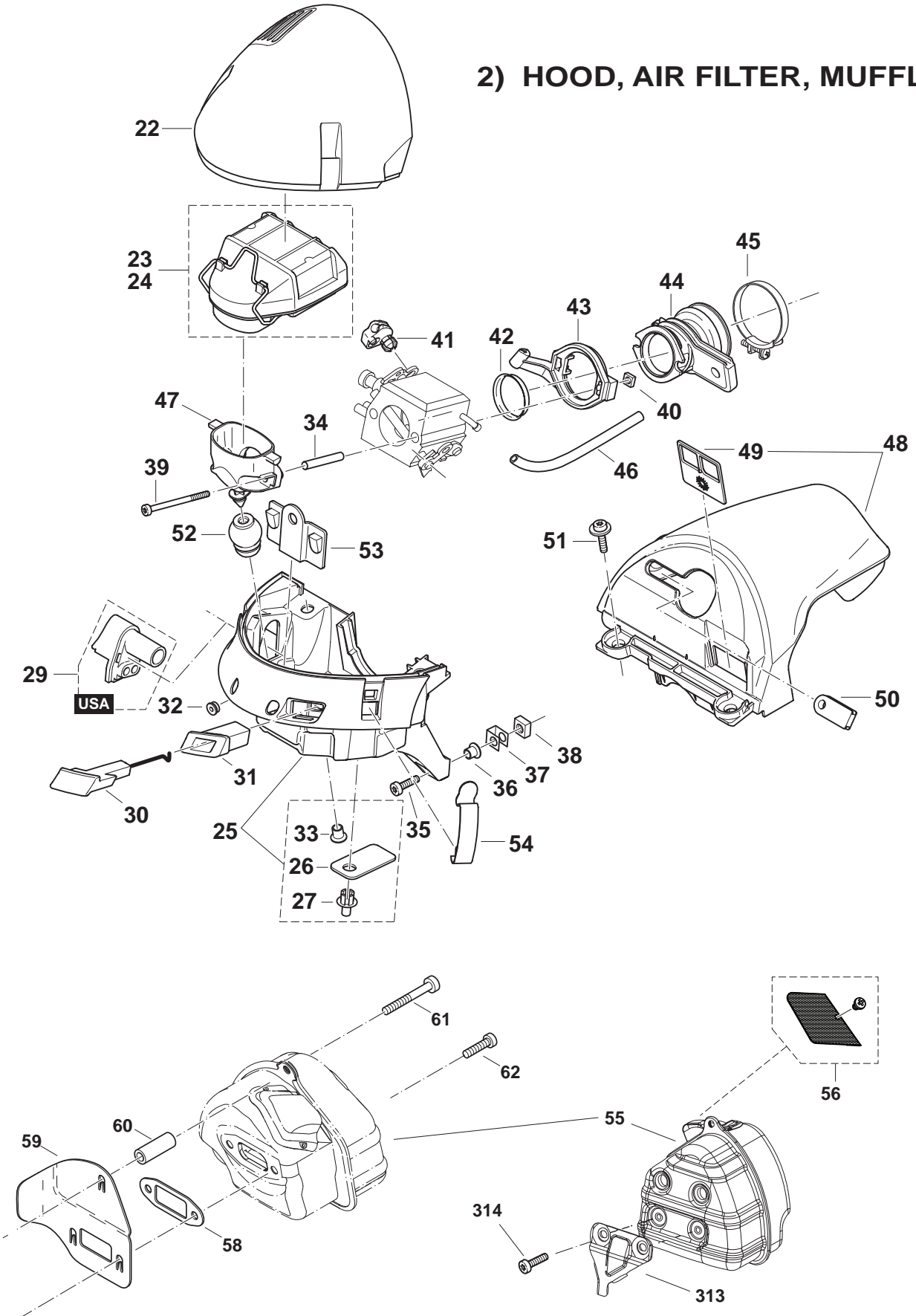
## CONTENTS:

- 1) Fuel tank, Tubular grip
- 2) Hood, Air filter, Muffler
- 3) Cylinder, Crankcase
- 4) Ignition electronics, Starter
- 5) Oil pump, Clutch
- 6) Chain brake
- 7) Carburetor
- 8) Accessories

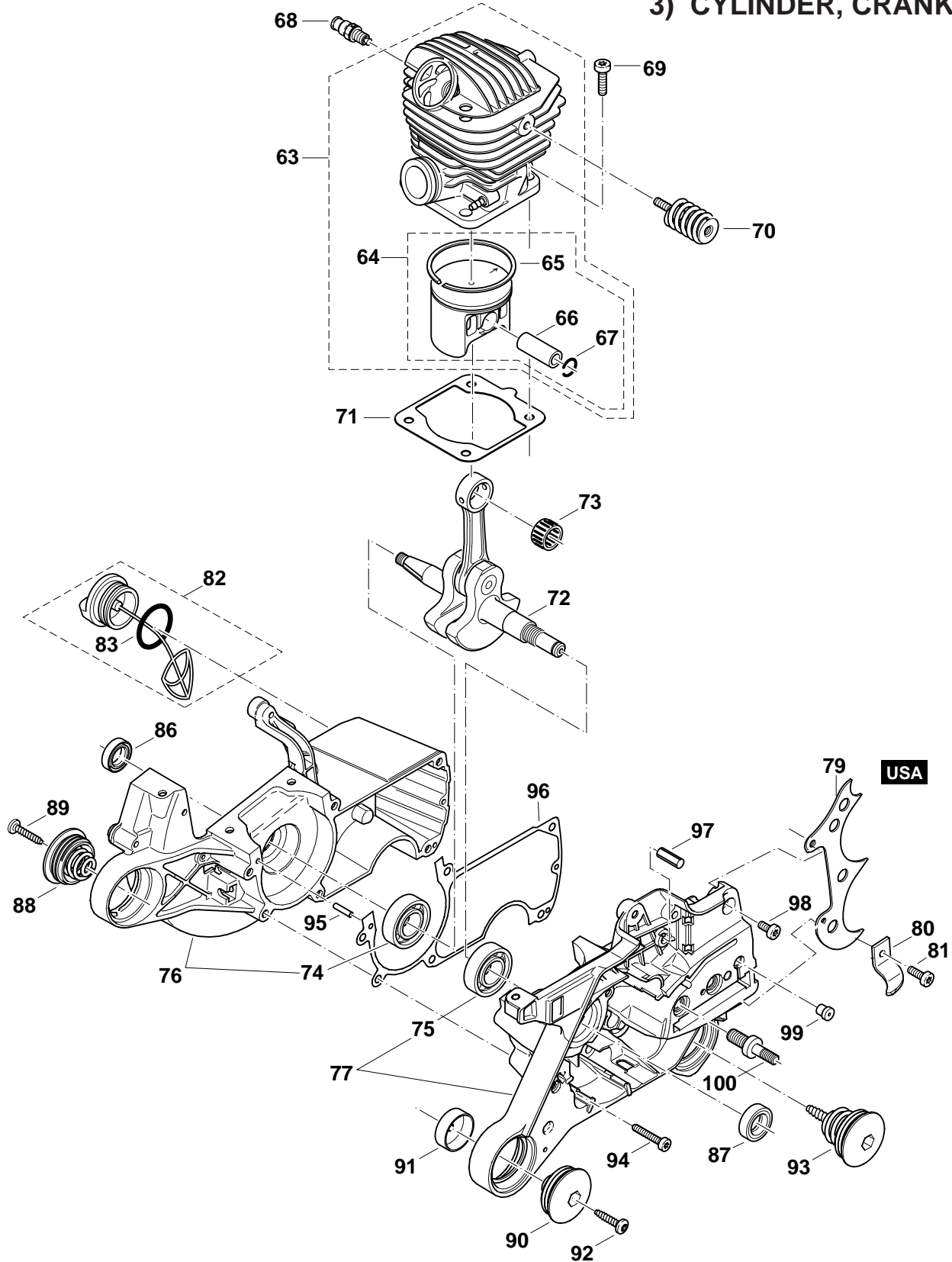
### 1) FUEL TANK, TUBULAR GRIP



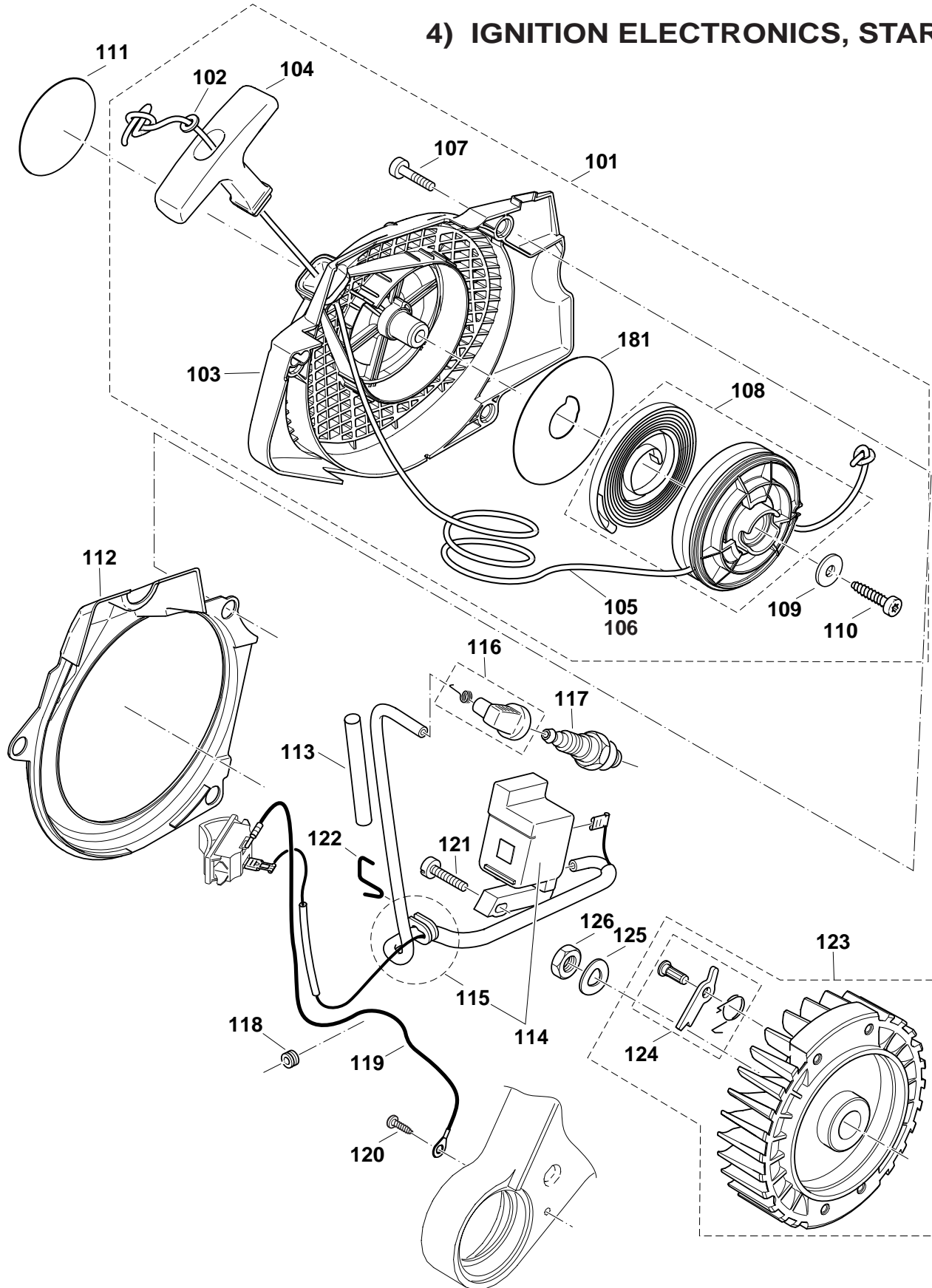
## 2) HOOD, AIR FILTER, MUFFLER



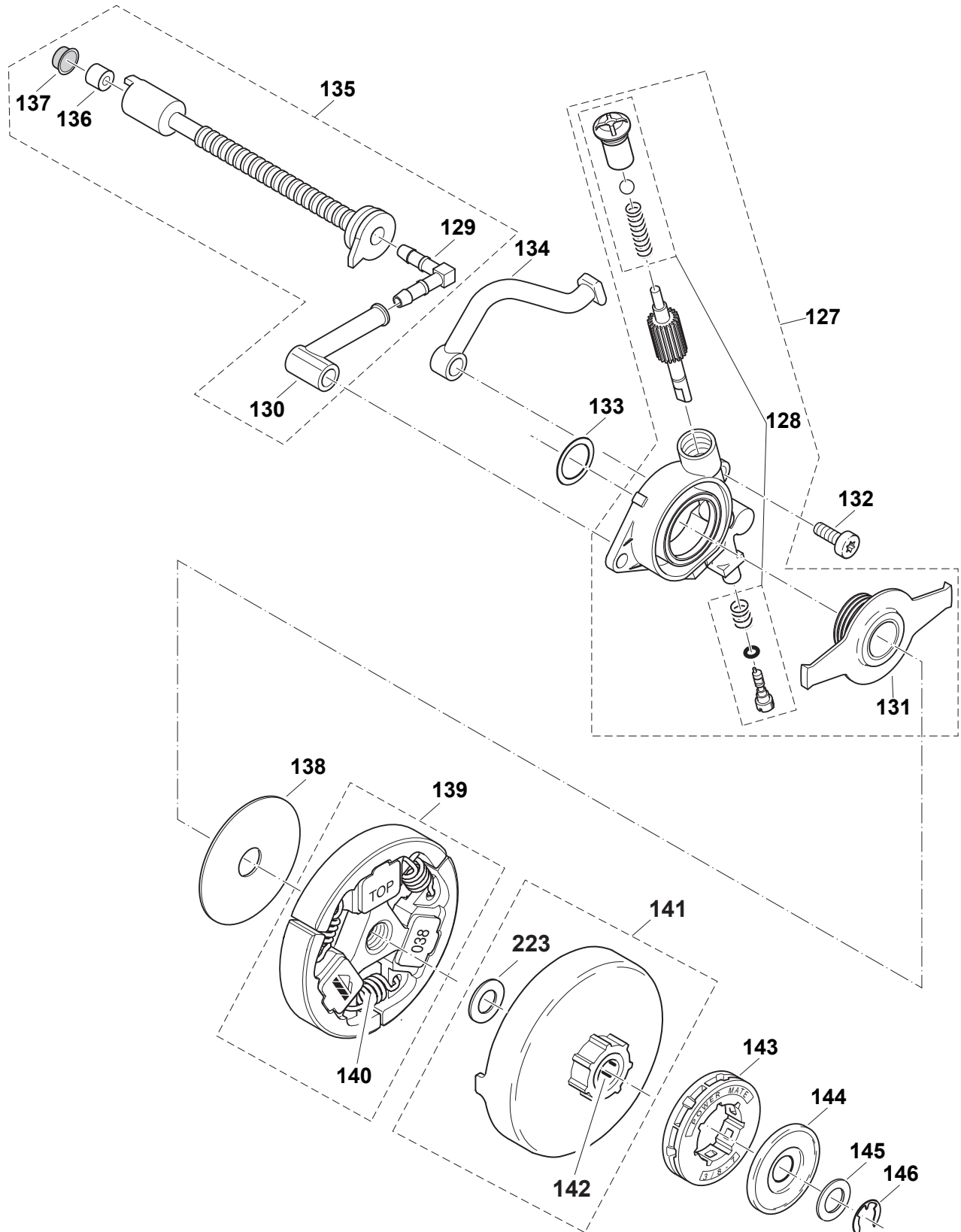
### 3) CYLINDER, CRANKCASE



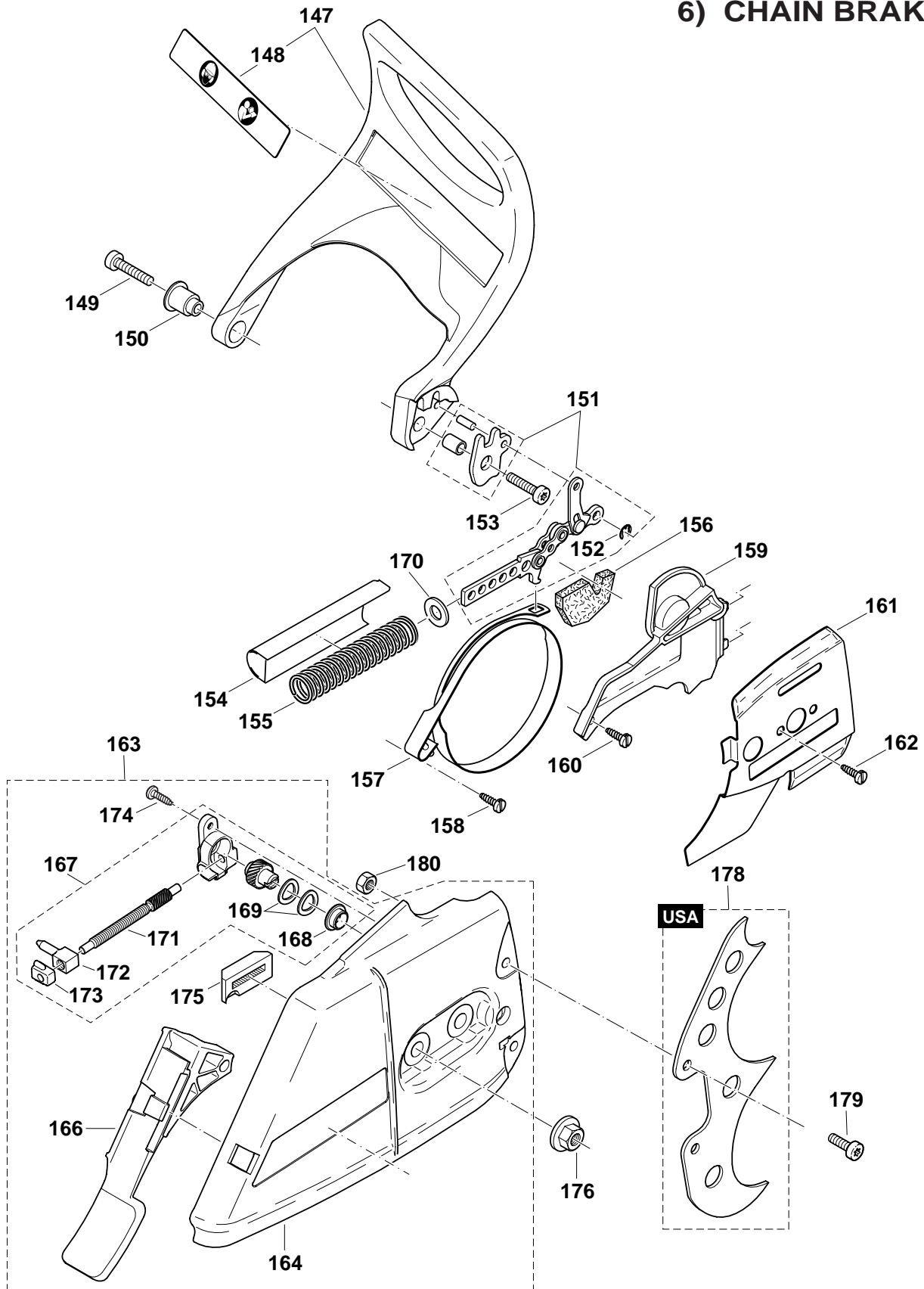
### 4) IGNITION ELECTRONICS, STARTER



### 5) OIL PUMP, CLUTCH

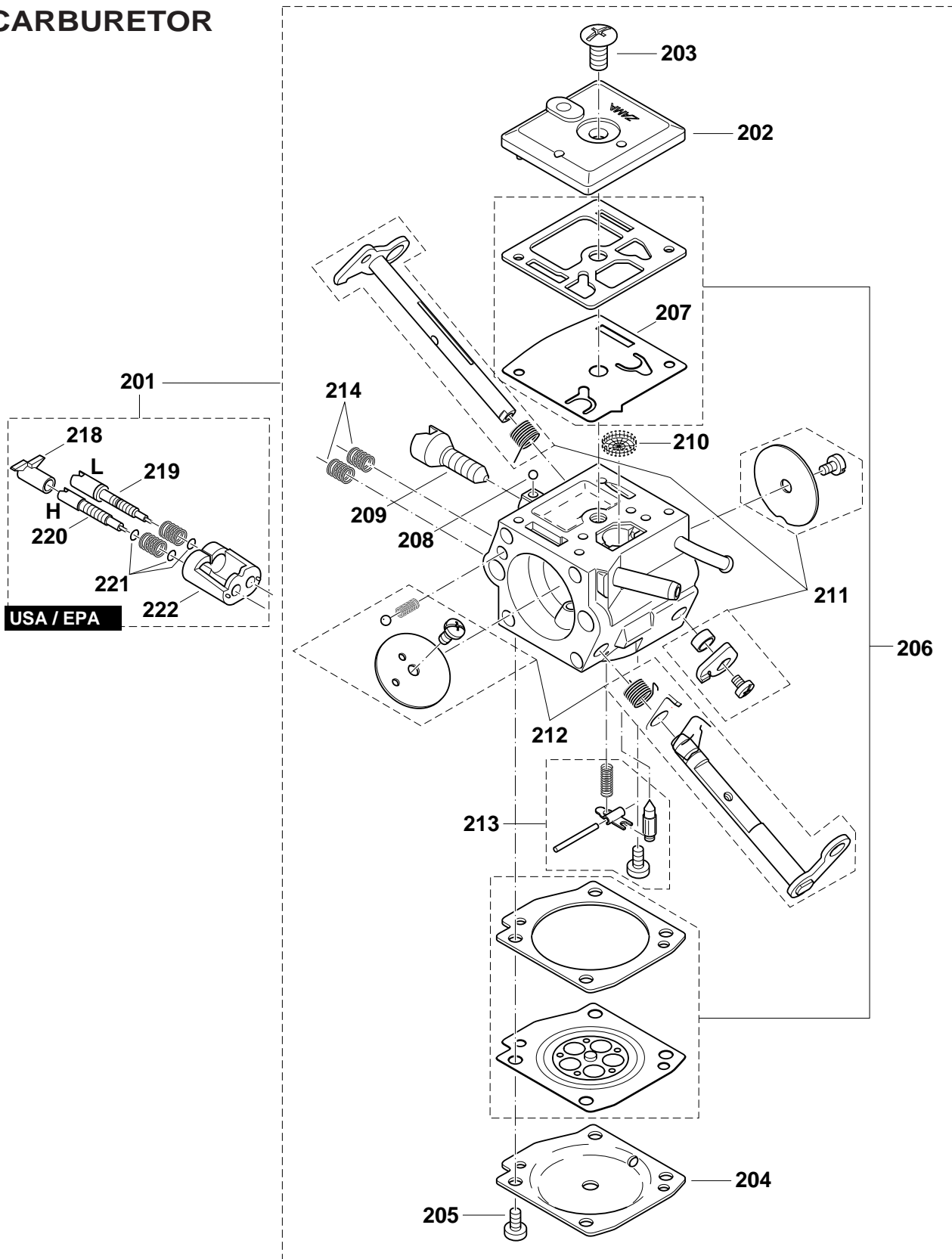


### 6) CHAIN BRAKE



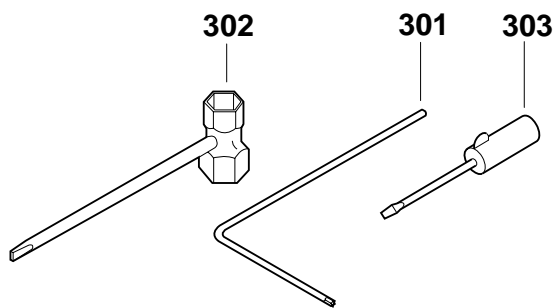
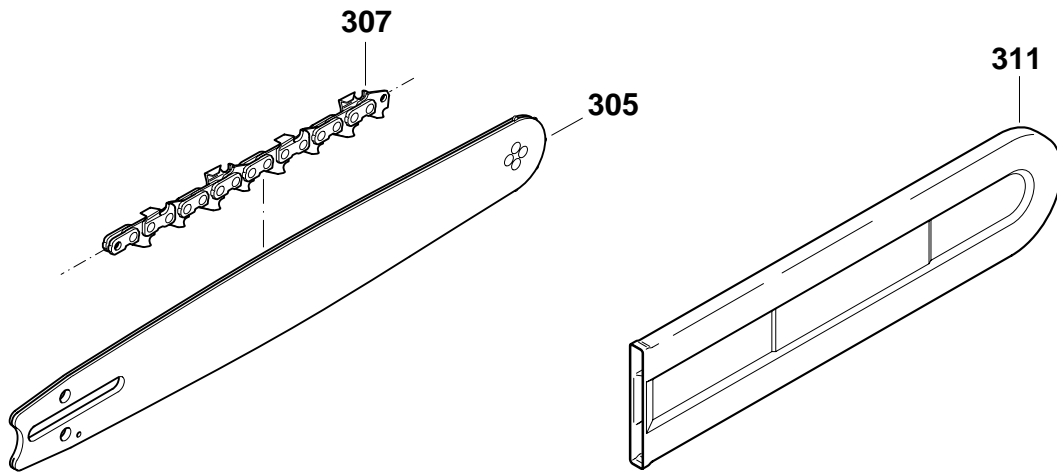


### 7) CARBURETOR





## 8) ACCESSORIES





# PARTS BREAKDOWN

rev 0\_12/02/2010

DCS642120

Products with multiple versions are listed in subsiding order with the newest version on top not indented.

*Corresponding bulletins are attached. Select bulletin name or attachment to view.*

Tech Bulletin	Fig. No.	Part No.	Description	Q'ty Unit	Notes
	1	038-310-020	TUBULAR HANDLE ASSY	1	
	2	038-310-061	CLAMP, DCS6401	1	
	3	908-006-145	SCREW 6x14	1	
	4	913-455-204	SCREW 5.5x20	4	
	5	038-114-608	TANK CPL., DCS6401	1	
	6	957-114-061	AIR VALVE CPL, DCS6401	1	
	7	038-114-630	GRIP PLATE, blue	1	
	8	038-117-020	CATCH LEVER	1	
	9	038-117-030	ROCKER	1	
	10	038-117-010	THROTTLE LEVER	1	
	11	038-117-050	SPRING	1	
	12	935-930-240	CYLINDRICAL PIN 3x24	1	
	13	935-930-280	CYLINDRICAL PIN 3x28	1	
	14	010-117-040	BOWDEN CABLE	1	
	15	913-340-204	SCREW 4x20 S27	1	
	16	038-114-051	FUEL LINE, DCS6401	1	
	17	975-001-241	SHORT CIRCUIT SWITCH, DCS6401	1	
	18	010-114-050	TANK CAP cpl.	1	
	19	963-228-030	PACKING RING 28x3	1	
	20	963-601-122	SUCTION HEAD CPL., DPC7321	1	
	21	963-601-240	FELT for SUCTION HEAD	1	
	22	038-118-622	COVER GREY, DCS6401	1	
	23	038-173-101	AIR FILTER CPL., DCS6401	1	
	24	038-173-011	AIR FILTER COMPLETE, NYLON, DCS6401	1	
	25	038-118-630	BOTTOM, blue	1	
	26	038-118-110	RUBBER FLAP	2	
	27	938-650-062	RIVET	2	
	29	038-118-120	ADJUSTING GUIDE	1	
	30	038-155-051	CHOKE SHAFT, DCS6401	1	
	31	038-155-020	CHOKE GUIDE	1	
	32	965-401-020	RUBBER BUSH	1	
	33	001-118-100	BUSHING	2	
	34	038-155-060	SPACER L=30MM	2	
	35	908-005-205	SCREW 5x20	2	
	36	001-118-100	BUSHING	2	
	37	038-111-050	CLIP	2	
	38	038-111-060	SQUARE NUT M5	2	
	39	908-204-555	SCREW 4x55	2	
	40	921-804-004	SQUARE NUT M4	2	
	41	038-155-012	RETAINING CLIP, DCS6401	1	
	42	038-131-031	INSERT FOR SUCTION HOSE, DCS6401	1	
	43	038-171-041	FLANGE	1	
	44	038-131-011	SUCTION HOSE, DCS6401	1	
	45	965-603-050	HOSE CLAMP	1	
	46	965-452-380	TUBE,L=65	1	
	47	038-171-011	CONNECTING MUFF, DCS7901	1	
	48	038-118-690	HOOD cpl., grey	1	
	49	038-118-140	INSERT	1	
	50	038-118-130	CABLE GUIDE	1	
	51	917-105-205	SCREW M5x20	2	
	52	038-171-030	HOLDER	1	
	53	038-118-100	PLUG	1	



PARTS BREAKDOWN  
rev 0\_12/02/2010

DCS642120

Products with multiple versions are listed in subsiding order with the newest version on top not indented.

[Corresponding bulletins are attached. Select bulletin name or attachment to view.](#)

Tech Bulletin	Fig. No.	Part No.	Description	Q'ty Unit	Notes
	54	038-118-071	STEEL CLIP	2	
	55	038-174-300	MUFFLER	1	
	56	038-174-910	SPARK ARRESTOR SCREEN	1	
	58	965-531-131	GASKET, DPC8112	1	
	59	038-174-021	COVER PLATE, DCS6401	1	
	60	038-174-030	CONNECTING LINK	1	
	61	908-305-405	SCREW M5x40	1	
	62	908-405-205	SCREW M5x20	2	
	63	040-130-033	CYLINDER/PISTON CPL., DCS6401	1	
	64	325-132-033	PISTON CPL. (47), DPC6410	1	
	65	325-132-050	PISTON RING (D=47)	1	
	66	119-132-030	PISTON PIN	1	
	67	119-132-060	SPRING RING C12x1	2	
	68	001-131-150	DECOMPRESSION VALVE	1	
	69	908-805-235	SCREW W/SPRING WASHER, DPC7331	4	
	70	038-114-152	SPRING W/THREADED INSERT, DCS6401	1	
	71	965-531-160	GASKET, DPC6410	1	
	72	038-120-021	CRANKSHAFT, DCS6401	1	
	73	962-210-019	NEEDLE CAGE	1	
	74	960-102-159	BALL BEARING 6202	1	
	75	960-102-179	BALL BEARING 6203 C4	1	
	76	038-111-660	CRANKCASE MAG.SIDE-BLUE, DCS6401	1	
	77	038-111-641	CRANKCASE CLUTCH SIDE,BLUE, DCS6401	1	
	79	038-250-201	SPIKE BAR (CRANKCASE), DCS6401	1	
	80	038-111-171	CHAIN CATCH, DCS6401	1	
	81	908-005-165	SCREW 5x16	1	
	82	010-114-050	TANK CAP cpl.	1	
	83	963-228-030	PACKING RING 28x3	1	
	86	962-900-052	RADIAL RING	1	
	87	962-900-061	RADIAL RING 17x28x5/4	1	
	88	038-114-130	SPRING cpl.,w/cap	1	
	89	913-455-204	SCREW 5.5x20	1	
	90	038-114-130	SPRING cpl.,w/cap	1	
	91	038-114-190	POT	1	
	92	913-455-204	SCREW	1	
	93	038-114-141	SPRING, DCS6401	1	
	94	908-005-305	SCREW 5x30	6	
	95	936-430-160	SPIRAL CLAMPING PIN 3x16	2	
	96	038-111-042	GASKET	1	
	97	934-660-250	SLOTTED PIN 6x24	1	
	98	908-005-125	SCREW 5X12	1	
	99	010-245-030	VENT VALVE	1	
	100	038-232-010	BOLT	2	
	101	038-160-604	STARTER ASS'Y., DCS6401	1	
	102	928-405-000	SPRING WASHER	1	
	103	038-112-630	FAN HOUSING, blue	1	
	104	001-161-020	STARTER GRIP, DPC6410	1	
	105	108-164-020	STARTER ROPE,(L=980MM)	1	
	106	985-000-155	STARTER ROPE, (L=100M)	1	
	107	908-605-205	SCREW M5x20	3	
	108	038-162-024	CABLE DRUM, DCS6401	1	
	109	924-605-510	WASHER 5.5x18x1.6	1	



PARTS BREAKDOWN  
rev 0\_12/02/2010

DCS642120

Products with multiple versions are listed in subsiding order with the newest version on top not indented.

[Corresponding bulletins are attached. Select bulletin name or attachment to view.](#)

Tech Bulletin	Fig. No.	Part No.	Description	Q'ty Unit	Notes
	110	913-455-204	SCREW 5.5x20	1	
	111	980-114-835	LABEL	1	
	112	038-112-020	AIR DUCT	1	
	113	970-502-110	INSULATING HOSE,L=140	1	
	114	038-143-041	IGNITION COIL RED, DCS6401H	1	
	115	038-143-030	CABLE HARNESS	1	
	116	957-604-240	PLUG CAP	1	
	117	965-603-021	SPARK PLUG	1	
	118	965-401-011	RUBBER BUSH	1	
	119	970-311-540	EARTH CABLE	1	
	120	915-135-100	SCREW BZ3.5x9.5	1	
	121	908-304-205	SCREW 4x10x20 S27	2	
	122	038-111-110	CLIP	2	
	123	038-141-000	FLYWHEEL ASSY.	1	
	124	108-166-051	STARTER RATCHET cpl.	2	
	125	926-208-001	SPRING WASHER	1	
	126	920-208-024	HEXAGONAL NUT M8x1	1	
	127	038-245-011	OIL PUMP CPL., DCS6401	1	
	128	030-245-070	REPAIR KIT	1	
	129	001-245-140	ANGULAR NIPPLE	1	
	130	038-245-110	OIL LINE	1	
	131	038-245-031	PUMP DRIVE, DCS6401	1	
	132	908-005-125	SCREW 5x12	2	
	133	038-224-021	DISC, DCS6401	1	
	134	038-245-061	OIL LINE, DCS6401	1	
	135	038-245-020	SUCTION LINE OIL cpl.	1	
	136	900-005-066	DISTANCE RING	1	
	137	963-601-100	STRAINER SCREEN	1	
	138	001-182-042	GUIDE DISC, DCS6401	1	
	139	038-180-011	CLUTCH ASS'Y, DCS6401	1	
	140	024-184-021	SPRING	3	
	141	957-223-092	CLUTCH DRUM CPL., DCS6401	1	
	142	962-300-009	NEEDLE SLEEVE, DCS510	1	
	143	119-224-070	RIM SPROCKET, T=3/8"	1	
	144	181-224-081	DISC, DCS510	1	
	145	021-224-011	DISC, DCS340	1	
	146	927-408-000	WASHER, D=8x1.3	1	
	147	038-213-221	HAND GUARD CPL., DCS6401	1	
	148	980-114-237	LABEL	1	
	149	908-405-205	SCREW 5x20	1	
	150	038-213-160	BUSHING	1	
	151	957-213-030	BRAKING MECHANISM	1	
	152	927-304-000	WASHER 4	1	
	153	908-005-206	SCREW 5x20	1	
	154	038-213-150	POT	1	
	155	038-213-130	SPRING	1	
	156	038-213-200	FOAM SPONGE	1	
	157	038-213-010	BRAKE SPRING	1	
	158	915-135-100	SCREW BZ3.5x9.5	1	
	159	038-213-040	PLATE	1	
	160	915-135-100	SCREW BZ3.5x9.5	1	
	161	038-111-030	GUIDE PLATE	1	



# PARTS BREAKDOWN

rev 0\_12/02/2010

DCS642120

Products with multiple versions are listed in subsiding order with the newest version on top not indented.

[Corresponding bulletins are attached. Select bulletin name or attachment to view.](#)

Tech Bulletin	Fig. No.	Part No.	Description	Q'ty Unit	Notes
	162	915-135-100	SCREW BZ3.5x9.5	1	
	163	038-213-641	SPROCKET GUARD CPL., DCS6401	1	
	164	038-213-635	SPROCKET GUARD, blue	1	
	166	038-213-190	CHIP GUIDE	1	
	167	957-213-023	CHAIN TENSIONER, DCS6401	1	
	168	038-213-080	BUSHING	1	
	169	038-213-210	SPRING WASHER	2	
	170	028-213-010	WASHER 12x9	1	
	171	957-213-040	TENSIONING SCREW, DCS6401	1	
	172	038-213-091	SQUARE NUT, DCS6401	1	
	173	038-213-070	TENSIONING SCREW BEARING	1	
	174	915-135-100	SCREW BZ3.5x9.5	1	
	175	024-213-240	CHAIN GUIDE	1	
	176	923-208-004	HEX. NUT M8	2	
	178	038-250-211	SPIKE BAR, DCS6401	1	
	179	908-005-125	SCREW M5x12	2	
	180	920-405-000	HEX. NUT M5	2	
	181	038-162-050	SPACER	1	
	201	038-153-023	CARBURETOR, DCS6401	1	
	202	038-153-030	PUMP COVER	1	
	203	038-153-360	SCREW	1	
	204	038-153-040	DIAPHRAGM COVER	1	
	205	001-153-020	SCREW	4	
	206	038-153-410	DIAPHRAGM/GASKETS SET, DCS6401	1	
	207	038-153-070	PUMP DIAPHRAGM	1	
	208	038-153-210	LOCKING BALL	1	
	209	038-153-220	IDLE STOP SCREW (S)	1	
	210	036-153-040	SCREEN, DCS34	1	
	211	957-153-061	THROTTLE SHAFT KIT, DCS6401	1	
	212	957-153-051	CHOKE SHAFT KIT, DCS6401	1	
	213	957-153-070	CONTROL PARTS, DCS6401	1	
	214	038-153-260	SPRING	2	
	218	038-153-310	LIMITER CAP	1	
	219	038-153-290	IDLE ADJUSTM. SCREW-L	1	
	220	038-153-300	MAIN ADJUSTM. SCREW-H	1	
	221	038-153-250	WASHER	3	
	222	038-153-320	ADJUSTING GUIDE	1	
	223	900-007-010	WASHER, DCS6401	1	
	301	940-827-000	ANGLED SCREW DRIVER	1	
	302	941-719-131	UNIVERSAL WRENCH	1	
	303	944-340-001	SCREW DRIVER	1	
	305	445-050-665	20" GUIDE BAR .050, 3/8"	1	
	307	523-102-072A	20" CHAIN , .050-3/8,DCS6401-20	1	
	311	952-100-653	CHAIN PROTECTION,20-24"	1	
	313	038-174-340	CARRIER FOR CATALYST	1	
	314	908-005-095	SCREW M5X9, DCS5200I	2	